



For community comment

INTENTION TO DECLARE A DOG EXERCISE AREA

BINALONG BAY

August 2020

INVITATION TO COMMENT

Break O'Day Council is seeking community comment on two options it has identified at Binalong Bay for locating a (one) 'dog park', or off-lead dog Exercise Area. Maps showing the two locations follow.

Council will consider public submissions it receives before deciding on a new dog park area.

Your submission can be delivered or posted to Council's office at 32-34 Georges Bay Esplanade St Helens, or by email to admin@bodc.tas.gov.au. **Submissions must be received before Monday 16 September 2019.**

Council, after deciding on a new dog park, would then build the new facility for safe use (eg. fencing), before Declaring it formally under the *Dog Control Act 2000* (Div. 2) to permit dogs to be exercised off-lead there. Declarations are for specific areas, any specified conditions under which dogs may be exercised and a period during which they remain in force.

BACKGROUND

The Break O'Day Dog Management Policy was revised in 2018. During the policy review beach access at Binalong Bay for dogs, on- and off-lead, was given extensive consideration by the community, the Parks and Wildlife Service, interest groups and Council. No agreed opportunities were found and Binalong Bay currently has no local beaches with access for off-lead dog exercise and limited beach access for dogs during warmer months.

Many community submissions during the policy review called for more land-based fenced facilities to provide off-lead opportunities for dog exercise. In response, the revised policy foreshadowed some new fenced Exercise Areas would be considered by Council, including at Binalong Bay.

The Dog Management Policy and further information can be found on [Council's webpages](#), including an online map of dog access zones (current Declared Areas).

Council has researched several possible options at Binalong Bay for a land-based dog park and is seeking community input on two options: Council's park on the corner of Felmingham St. and Treloggen Dr., and Crown Land under the power line between Felmingham St. and Coffey Dr.

A new dog park would be fenced to avoid active dogs running free and provide safe a space that dogs and their owners are entitled to use for exercise.

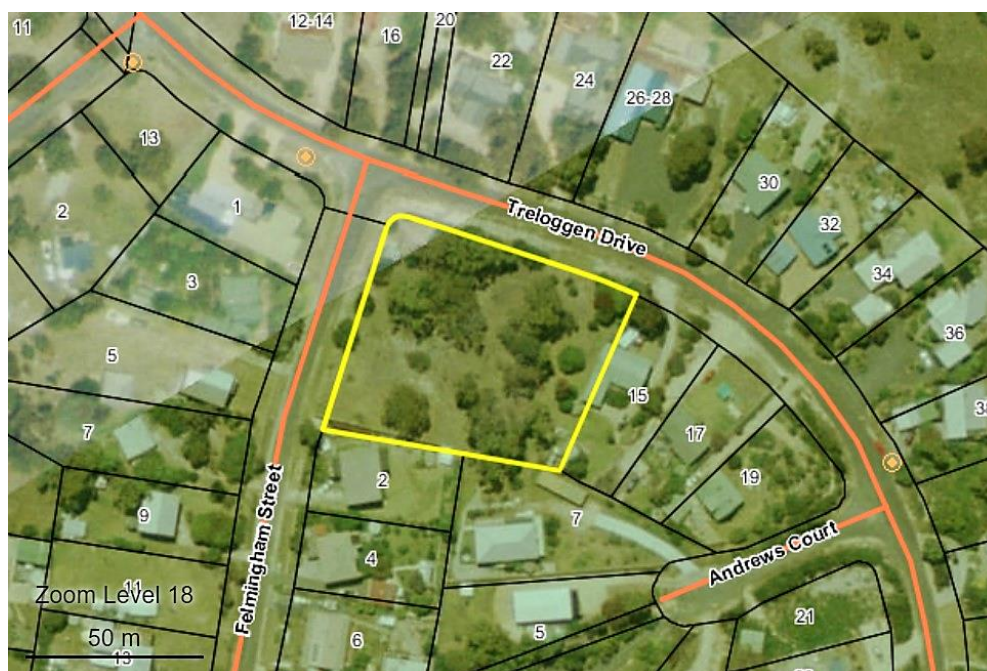


A. FELMINGHAM STREET COUNCIL PARK

Parkland at the corner of Felmingham Street and Treloggen Drive is a Councilowned reserve 0.4Ha in area (55x70m).

It already has some recreational use and has three neighbouring residential properties, which are partly fenced with a few private access gates on to the park. It has a rough mown surface between remnant native trees and shrubs, which provide shelter. There is one newish bench seat and some older park furniture.

As well as fencing and a dog waste bin/bag dispenser, some car parking bays, a tidy and possibly more seating and a water supply for dogs may be needed for development as a dog exercise area.



B. CROWN LAND, COFFEY DRIVE

Land between Coffey Drive and Felmingham Street is 'Future Potential Production Forest' Land managed by the Parks and Wildlife Service. Council could apply for a Crown licence to use all or part of the 4.8Ha, which includes a gully area beside Treloggen Drv. (not shown below). Healthy peppermint forest occurs over most of the land.

It is already used for recreation, including dog walking. A power line runs through the middle between Coffey Drv. and Felmingham St., with a rough 4wd track to its side. Several pedestrian paths crisscross the land.

The area under a power line running between Coffey Drive and Felmingham Street is kept roughly slashed already and a section of this (0.25Ha, 165mx14m shown below) could be developed for safe off-lead dog exercise. That would include a fence and a dog waste bin/bag dispenser, more regular slashing and possibly seating and a water supply for dogs.

